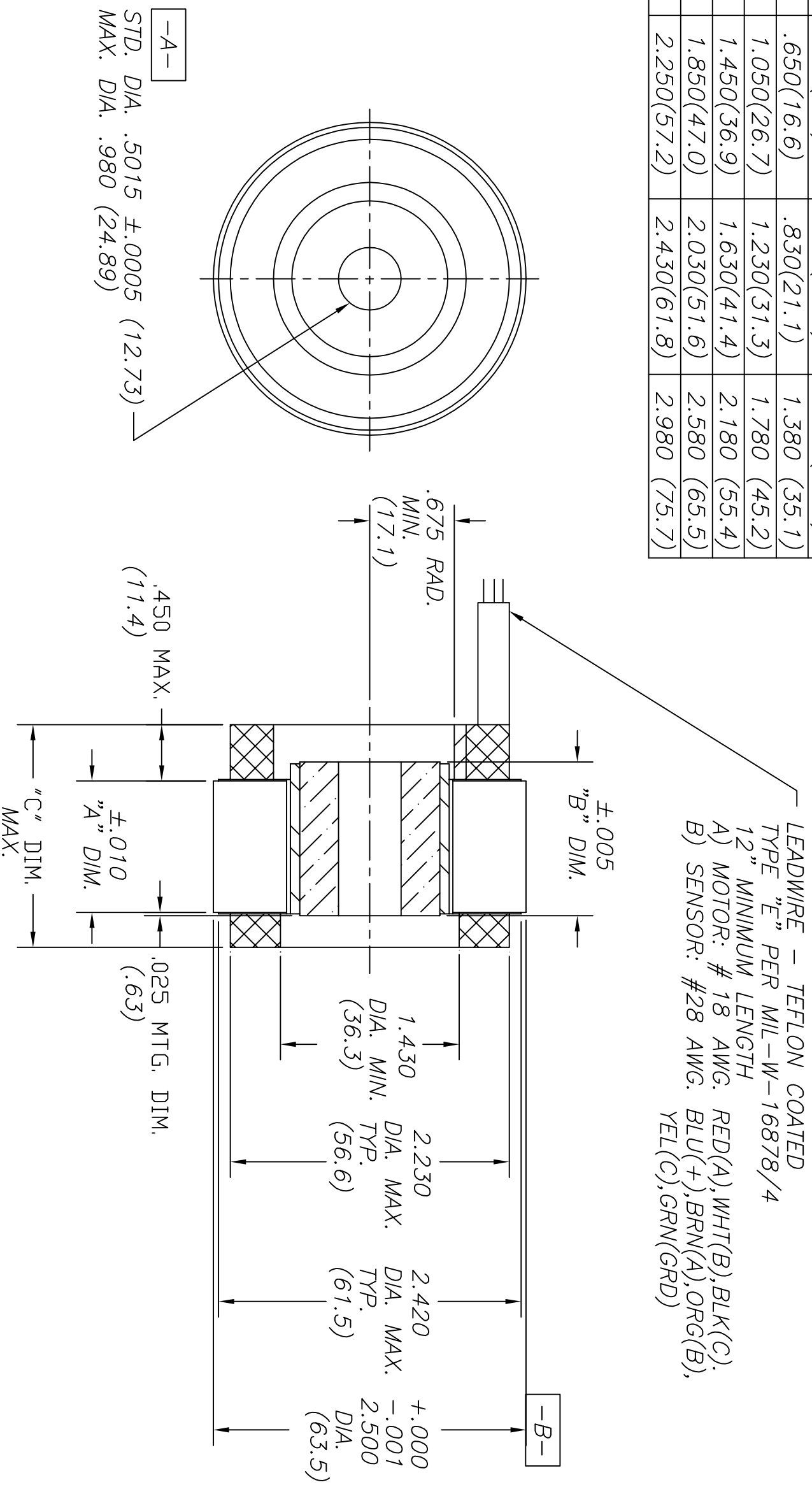


REVISION

ECN	LTR	DESCRIPTION	DATE	APPROVED
8607	A	CHANGE PER ECN	2/9/96	GLG

MODEL	"A" DIM.	"B" DIM.	"C" DIM.
HT02500	.250(6.4)	.430(10.9)	.980 (24.9)
HT02501	.650(16.6)	.830(21.1)	1.380 (35.1)
HT02502	1.050(26.7)	1.230(31.3)	1.780 (45.2)
HT02503	1.450(36.9)	1.630(41.4)	2.180 (55.4)
HT02504	1.850(47.0)	2.030(51.6)	2.580 (65.5)
HT02505	2.250(57.2)	2.430(61.8)	2.980 (75.7)



1. MOTOR SUPPLIED AS TWO SEPARATE COMPONENTS, ROTOR ASSEMBLY AND STATOR ASSEMBLY.
2. DIAMETERS "A" AND "B" TO BE CONCENTRIC WITHIN .002 WHEN MOUNTED.
3. MOUNTING SURFACE BETWEEN 2.500 AND 2.420 DIAMETERS ON BOTH SIDES.

UNLESS OTHERWISE SPECIFIED DIMENSIONS ARE IN INCHES TOLERANCES ON		DRAFTSMAN:	DATE:	 TULSA, OK 741146-3638, USA OUTLINE DRAWING FRAMELESS MOTOR	
ANGLES	3 PLACE	CHECKER:	05/04		
±0° 30'	DEC ±.005	ENGINEER:			
DO NOT SCALE	DEC ±.01	CUSTOMER:			
MATERIAL	DO NOT SCALE			DWG CODE	DRAWING NUMBER
FINISH				IDENTIFICATION NUMBER	HT025 SERIES
				SIZE	3HNO4
				SCALE:	SHEET 1 OF 1