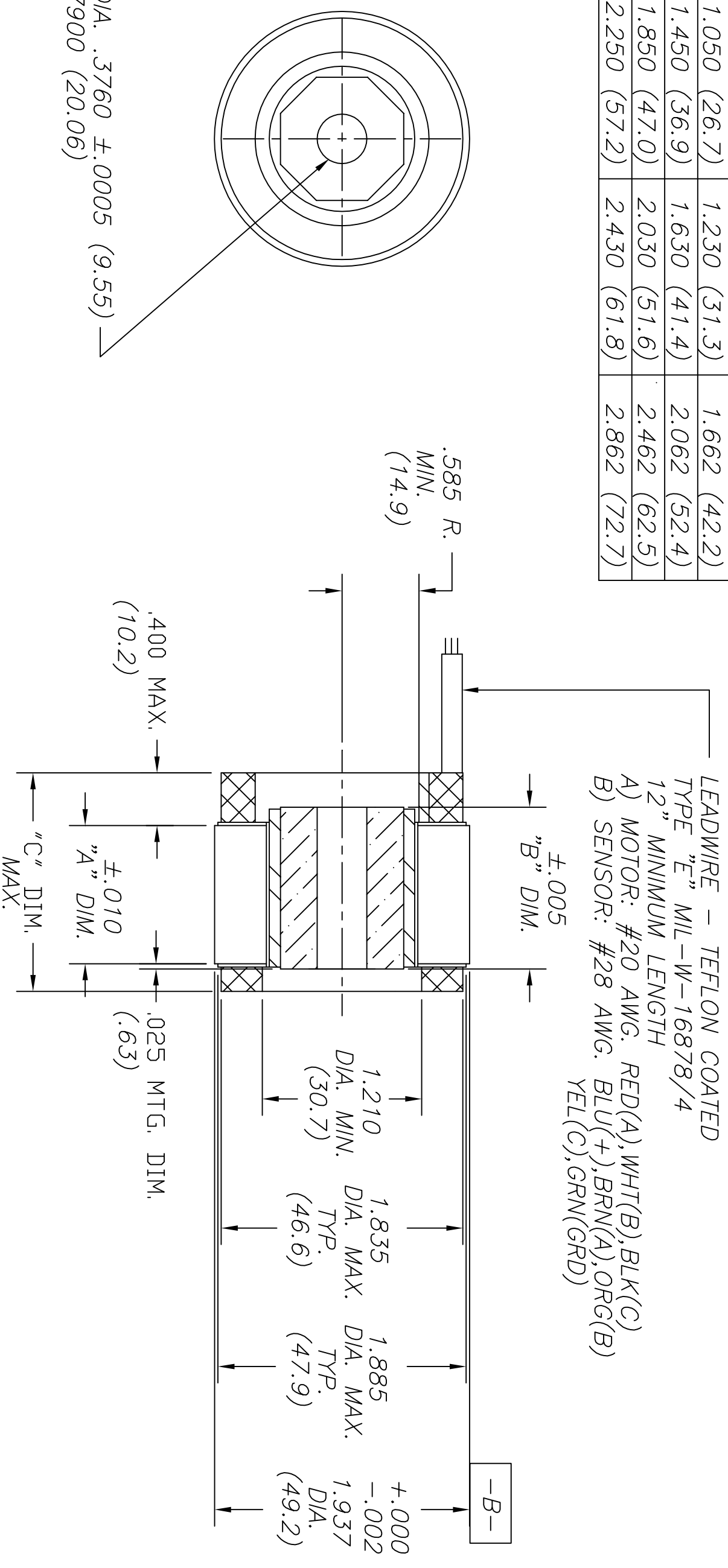


REVISION

ECN	LTR	DESCRIPTION	DATE	APPROVED
---	B	REVISE AND REDRAW	6/97	BWT

MODEL	"A" DIM.	"B" DIM.	"C" DIM.
HTO2000	.250 (6.4)	.430 (10.9)	.862 (21.9)
HTO2001	.650 (16.6)	.830 (21.1)	1.262 (32.1)
HTO2002	1.050 (26.7)	1.230 (31.3)	1.662 (42.2)
HTO2003	1.450 (36.9)	1.630 (41.4)	2.062 (52.4)
HTO2004	1.850 (47.0)	2.030 (51.6)	2.462 (62.5)
HTO2005	2.250 (57.2)	2.430 (61.8)	2.862 (72.7)



1. MOTOR SUPPLIED AS TWO SEPARATE COMPONENTS, ROTOR ASSEMBLY AND STATOR ASSEMBLY.
2. DIAMETERS -A- AND -B- TO BE CONCENTRIC WITHIN .002 WHEN MOUNTED.
3. MOUNTING SURFACE BETWEEN 1.937 AND 1.885 DIAMETERS ON BOTH SIDES.

UNLESS OTHERWISE SPECIFIED DIMENSIONS ARE IN INCHES TOLERANCES ON		DRAFTSMAN:	DATE:		
ANGLES	3 PLACE	CHECKER:	6/97		
±0° 30'	DEC ±.005	ENGINEER:		TULSA, OK 74146-3638, USA	
DO NOT SCALE		CUSTOMER:		OUTLINE DRAWING	
FINISH				FRAMELESS MOTOR	
DWG IDENTIFICATION NUMBER 3HNO4		DRAWING NUMBER HTO20 SERIES		SCALE: SHEET 1 OF 1	