

# Brushless DC Motors with Integral Speed Drive

## KinetiMax 68 EB Series

*68 mm diameter, up to 170 mNm cont. torque, up to 50 W output power*

The KinetiMax 68 EB series of brushless DC motors with integrated drive electronics are compact yet powerful outer-rotor motors. The external rotor and iron core stator minimize cogging and maximize output torque. The KinetiMax 68 motors are designed with a bearing system capable of handling high side loads.

High quality components ensure the KinetiMax 68 motor life exceeds 20,000 hours. The output torque range of this family has a maximum of 170 mNm, and the speed range extends to 6000 RPM.

Typical applications for the KinetiMax 68 include many types of gear pumps and peristaltic pumps, high-end fans and blowers, and laboratory equipment.

### Options & Accessories

- Special shaft diameter and machining
- Customized mounting flange
- Custom leads and connector configurations
- Special winding configurations
- Provisions for gearbox mounting
- IP 55 rating
- PWM or frequency speed set in place of analog input



### Features & Benefits

- Outer-rotor precision 68 mm dia. brushless DC motor with integrated drive electronics
- Models rated at 35 and 50 W output power, rated torque up to 170 mNm, no-load speed up to 6000 RPM
- Adjustable speed and direction selection
- Thermal overload protection with automatic recovery
- Low EMI – complies with EN 55014-1/2, EN 61000-6-1/3
- Standard IP43 protection level
- Model 01658033 includes integral electrical brake





### QuickShip Products

Some of the part number configurations for this product are in stock and available for ***immediate delivery!***

Look for the QuickShip symbol next to available part numbers. Then, click on the part number to go directly to our online store.



## KinetiMax 68 EB – Specifications

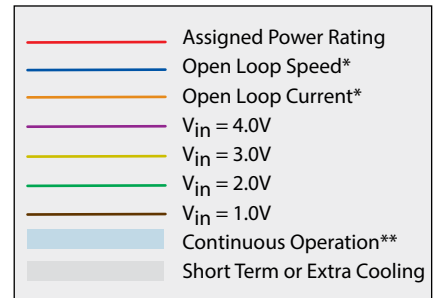
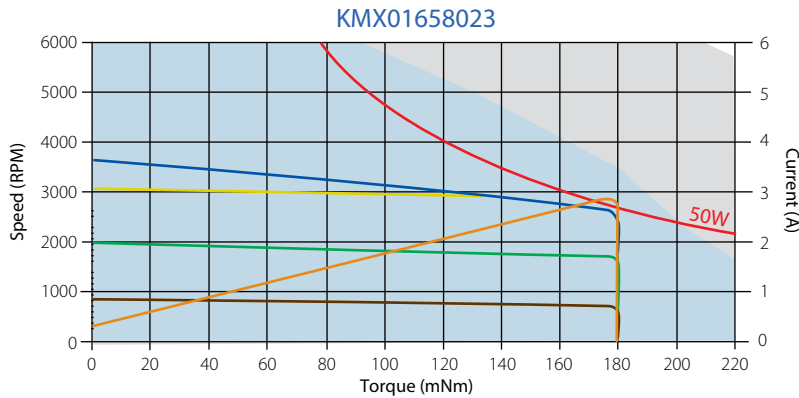
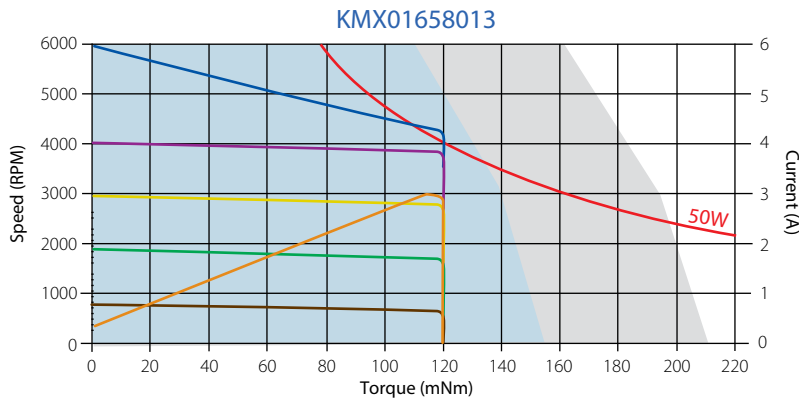
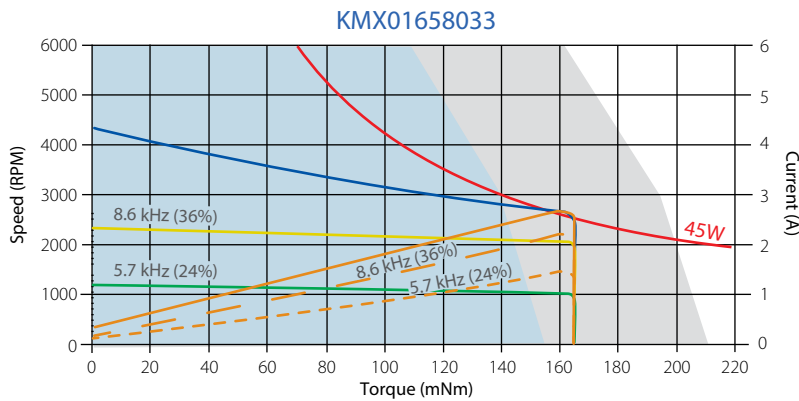
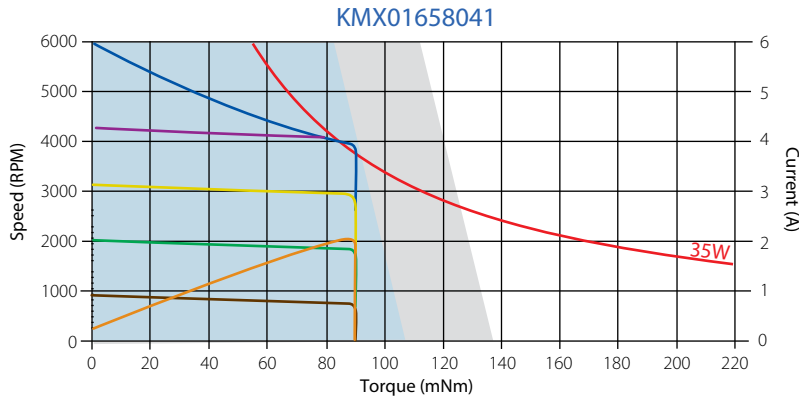
		KMX-01658041	KMX-01658033	 <a href="#">KMX-01658013</a>	 <a href="#">KMX-01658023</a>
Model		KMX-01658041	KMX-01658033	 <a href="#">KMX-01658013</a>	 <a href="#">KMX-01658023</a>
Length		49.1 (1.93)	62.1 (2.44)		
Voltage VDC	Nominal	24			
	Range <sup>1</sup>	14 – 30			
Rated Output Power	W	35	50		
Torque mNm (oz.in.)	Rated	70 (9.9)	110 (15.6)		170 (24.0)
	Max	90 (12.7)	150 (21.2)	120 (17.0)	180 (25.5)
Speed RPM	Rated	3650	2500	3750	2400
	No-load	6000	4330	6000	3650
Current A	Rated – A	2	3		
	Max – A	2.3	3.4		
	No-load – mA	215	180	260	265
Rotor Inertia kgm <sup>2</sup> (oz.in.s <sup>2</sup> )		0.75 E-4 (0.0106)	1.2 E-4 (0.017)		
Mechanical Time Constant ms		30	40	25	
Thermal Resistance Housing-Ambient °C/W		4.2	3.7		
Weight g (oz)		450 (15.9)	550 (19.4)		
Protection Level		IP43			
Gearbox (option)		On request			
Speed-Voltage Input Ratio	RPM/V	1000	1100	1000	
	Set Point	0 - 6			
Speed Input V	Threshold	0.25	N/A	0.25	
	Brake Active	N/A	0 to 0.4	N/A	
	Motor Disable	N/A	0.4 to 0.7..1.05	N/A	
Direction Input V	CCW	< 1			
	CW	> 4			
Speed Output Signal	PPR	36			
	Low Time μsec	168			
Operating Temperature Range °C (°F)		0 – 70 (32 – 158)			
Thermal Limit Protection <sup>2</sup> °C		90 (194) flange temp. / 80 (176) restart			

Values valid for nominal voltage and  $T_{amb} = 22\text{ °C}$

<sup>1</sup> Power supply provided with appropriate 1000 μF buffer capacitor between supply voltage and common to comply with EN 55014-1/2.  
(See additional EMC information on page 4.)

<sup>2</sup> Motor temperature measured at aluminum bearing support

# KinetiMax 68 EB – Performance

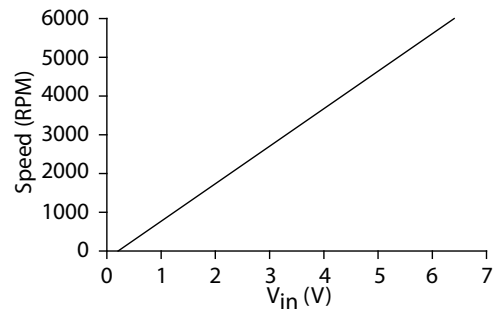
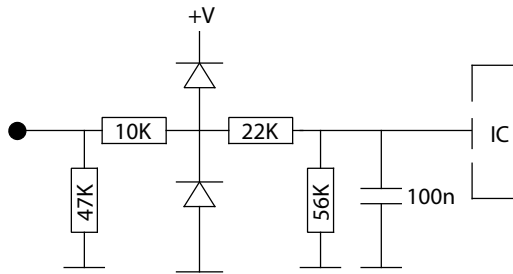


\* @ Rated Voltage

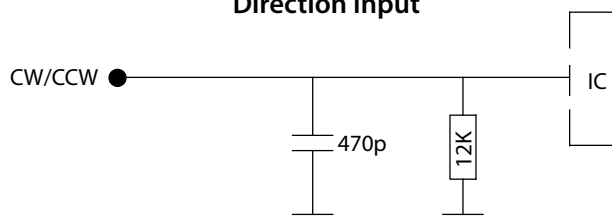
\*\*  $T_{amb} = 22^{\circ}C$

## KinetiMax 68 EB – I/O Schematics

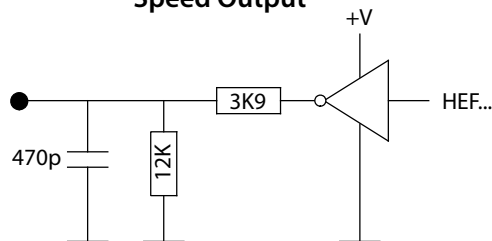
### Speed Input



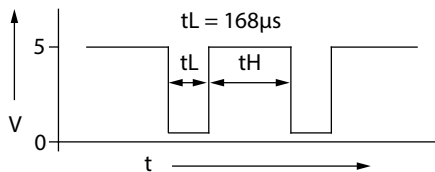
### Direction Input



### Speed Output

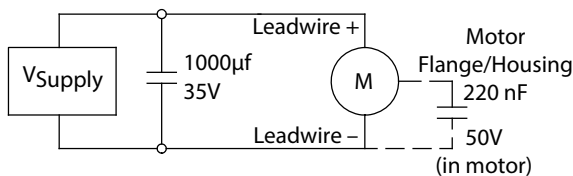


### Speed Output Signal



### EMC

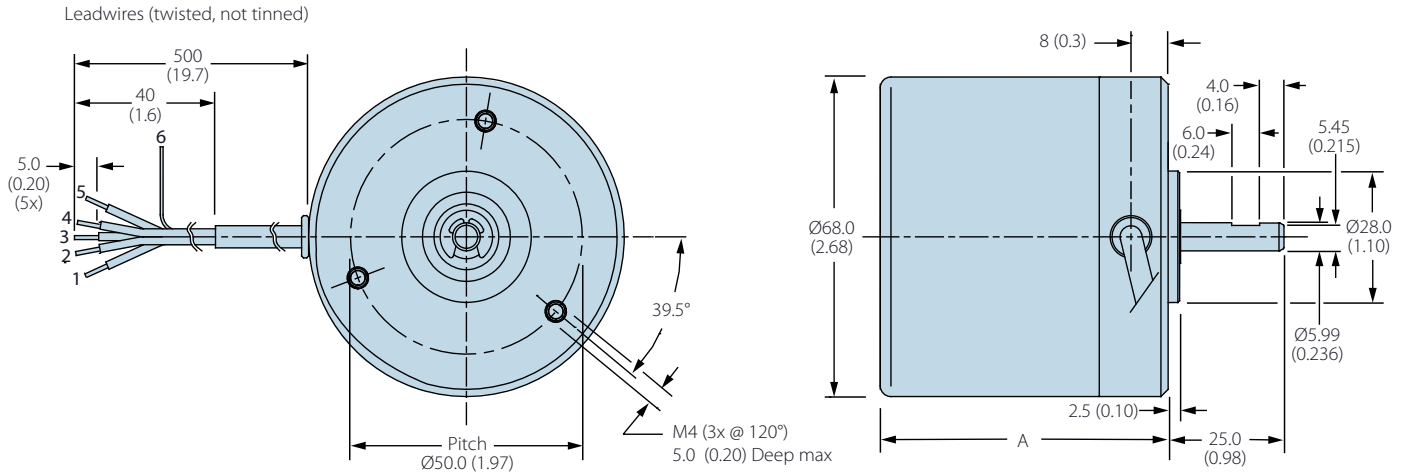
To meet EMC directive EN 55014, the power supply must be provided with a capacitor 1000µf, 35V at the output:



## KinetiMax 68 EB – Electrical Connections

Version	Description	Wire Color (AWG 24)
5-Wire	1 Supply voltage (+24V)	Red
	2 Ground	Black
	3 Speed control (V <sub>in</sub> ) 0 – 5V (1V/1000 RPM)	White
	4 Speed output (FG) 36 pulses/rev tachometer	Green
	5 Direction input (Fw/Rv) CCW/CW	Brown
	6 Shield/ground to motor housing	—

## KinetiMax 68 EB Dimensions — mm (in)



	Length A
KMX-01658041	49.1 (1.93)
KMX-01658033	
KMX-01658013	62.1 (2.44)
KMX-01658023	

## Custom & Specific-Purpose Products & Sub-Assemblies

Allied Motion offers a very wide selection of standard motion control solutions to satisfy the requirements found in the commercial, industrial and aerospace and defense markets. And, we are adding new products every year to meet new demands we find in those markets.

However, a recognized strength of Allied Motion is our willingness and ability to develop custom motion control products and systems to meet the specific needs of customers. Please contact us to discuss your specialized application requirements.

## Allied Motion Solution Centers

Allied Motion maintains Solution Centers in three geographically strategic locations to assist our customers with all aspects of their product selection and buying decisions. These facilities assure local support no matter your location around the globe.

Each Solution Center's experienced application engineering and customer service team provide:

- Application analysis assistance
- Detailed product information and documentation
- Standard product selection
- Product customization and options guidance
- Specification development assistance for custom-design products
- Price quotations
- Ordering, order status and shipment information
- Logistics assistance

For assistance with your project, contact us at one of our continental Allied Motion Solution Centers listed below.

Allied Motion also has a global network of factory trained selling partners to serve you. Visit our website for contact information for the Allied Motion Sales Partner nearest you.



## High-Performance Specialty Motors & Application-Specific Motion Systems

Aerospace & Defense  
Automation  
Commercial-Consumer  
Industrial  
Medical  
Pumps  
Robotics  
Vehicles

[www.alliedmotion.com](http://www.alliedmotion.com)

## North America

United States, Canada, Mexico:

### Allied Motion Technologies NASC

495 Commerce Drive  
Amherst, NY 14228 USA

+1 (716) 242-7535

[inquiry@alliedmotion.com](mailto:inquiry@alliedmotion.com)

## Europe

UK, Ireland, continental Europe,  
Eastern Europe, Scandinavia, Israel:

### Allied Motion Technologies EUSC

Ekbacksvägen 26, PO Box 11198  
S-161 11 Bromma, Sweden

+46 (8) 546 111 00

[inquiry@alliedmotion.com](mailto:inquiry@alliedmotion.com)

## Asia

China, Taiwan, Japan, S. Korea, and  
other Far East Countries:

### Allied Motion Technologies ASC

58 Leshan Road  
Xinbei District, Changzhou 213022  
China

+852 2607 4038 +86 519 85113625

[inquiry@alliedmotion.com](mailto:inquiry@alliedmotion.com)