

Torque Motors

HT0080x Series High Torque Brushless Torque Motors

High Torque Density, Sinusoidal BEMF, Frameless

Allied Motion's **HT (High Torque) series of frameless brushless torque motors** are available in nine diameters from 19.3 mm (0.76 in) up to 127 mm (5 in). The HT0080x series is featured in this datasheet.

Each frame size is available in up to six stack lengths, enabling designers to choose from a number of performance levels in each frame size.

Continuous stall torque ratings range from 0.008 Nm (1.1 oz-in) up to 9 Nm (1277 oz-in). Winding voltage is 24 V and 100 V for the largest two frame sizes. Integral Hall effect commutation sensors are provided as standard, and require no setup on the part of the user.

The standard HT series motors are especially well suited for direct integration into applications that demand high power density motors with minimum size, weight, and inertia. Non-standard models of the HT series are also available in stator diameters up to 239 mm (9.42 in).

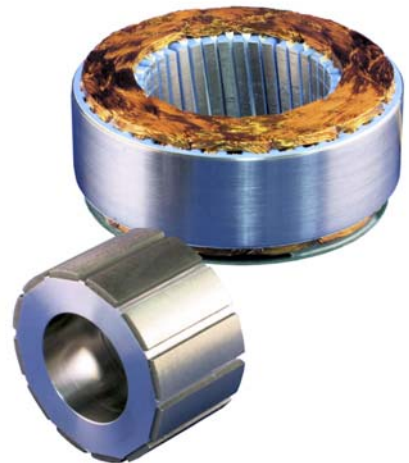
Typical applications for the HT series are semiconductor manufacturing equipment, medical systems, including life support, robotic systems, laser sighting and control, and cryogenic cooling pumps, to name a few.

Features & Benefits

- Frameless high torque-to-inertia motors with continuous stall torque rating up to 9 Nm (1277 oz-in)
- Frame diameters from 19.3 mm (0.76 in) to 127mm (5 in)
- Continuous power ratings from 7 W up to 665 W
- Class F (155 °C) winding insulation temperature rating
- Rare-earth neodymium iron boron magnets as standard
- Integral hall-effect commutation sensors as standard

Options

- Samarium Cobalt magnets for very high temperature environments.
- Available non-standard designs with stator diameter up to 239 mm (9.42 in)
- Alternate winding voltages
- Housed versions with feedback (encoder or resolver)
- Custom design versions



- High torque density frameless brushless motors
- Continuous stall torque from 0.008 Nm (1.1 oz-in) through 9 Nm (1277 oz-in)
- Continuous power ratings from 7 W through 665 W.

SPECIFICATIONS SUMMARY

Model	Units	HT0080x	HT0100x	HT0150x	HT0200x	HT0230x	HT0250x	HT0300x	HT0380x	HT0500x
Rated Power	W	7 - 13	11 - 26	31 - 71	48 - 97	56 - 129	59 - 167	89 - 291	170 - 383	271 - 665
Stall Torque (continuous)	oz-in	1.1 - 3.0	3.4 - 12.7	7.5 - 36.2	17.9 - 93.2	35.9 - 175.8	30.6 - 174.8	57.3 - 317.9	111.8 - 653.8	226 - 1277
	Nm	0.008 - 0.021	0.024 - 0.09	0.053 - 0.256	0.127 - 0.658	0.254 - 1.242	0.216 - 1.235	0.405 - 2.245	0.789 - 4.617	1.60 - 9.02
No-load Speed	RPM	10891 - 18298	4796 - 8510	2713 - 6897	1429 - 3948	618 - 1904	847 - 1954	797 - 1857	545 - 1568	419 - 1424
Winding Voltage	VDC	24							100	

Brushless Torque Motors

HT0080x Series High Torque Frameless Brushless Torque Motors

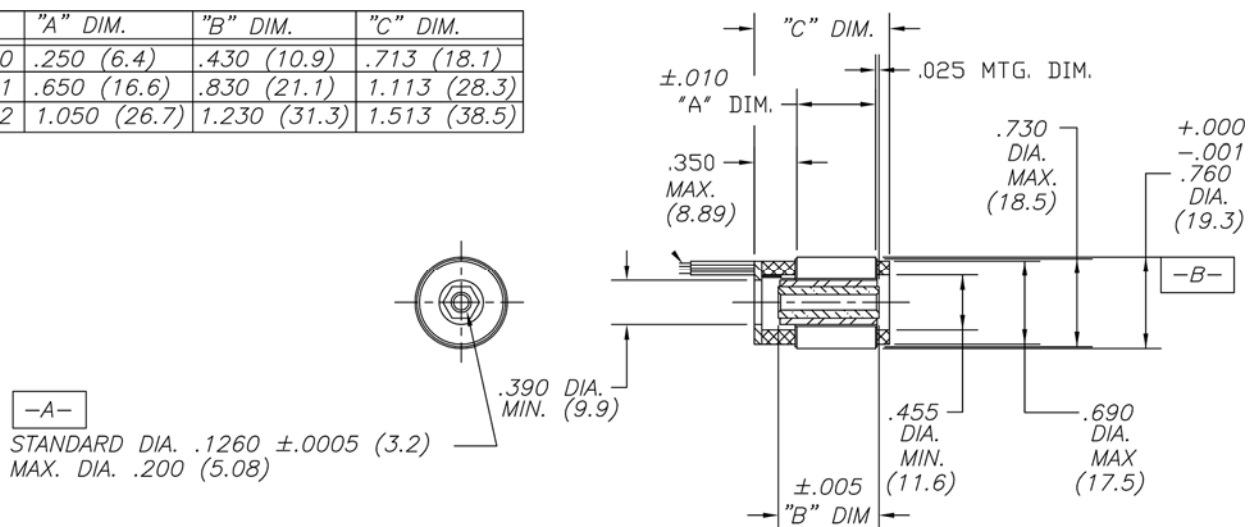
SPECIFICATIONS

Model No.		HT00800-A00	HT00801-A00	HT00802-A00
Stall Torque (continuous) ⁽¹⁾	oz-in	1.1	2.1	3.0
	Nm	0.008	0.015	0.021
Demag. Torque (±25%)	oz-in	11	27	34
	Nm	0.07	0.19	0.24
Rated Power ⁽¹⁾	W	7	11	13
Motor Constant	oz-in/√W	0.65	1.09	1.44
	Nm/√W	0.005	0.008	0.010
Elect. Time Constant	ms	0.10	0.1	0.20
Mech. Time Constant	ms	2.3	1.5	1.4
Thermal Resistance	°C/W	21.1	17.1	14.6
Cogging Torque (max.)	oz-in	0.200	0.600	1.100
	Nm	0.0014	0.0042	0.0078
Rotor Inertia	oz-in-s ²	7.0E-6	1.4E-5	2.1E-5
	kg-m ²	4.95E-8	9.69E-8	1.5E-7
Weight	oz	0.5	1.1	1.6
	kg	0.01	0.03	0.04
Poles	-	6		
Winding Code	-	A		
Winding Voltage	V	24		
Peak Torque	oz-in	5	12	16
	Nm	0.033	0.086	0.110
Peak Current	A	2.7	6.0	5.6
Torque Constant (±10%)	oz-in/A	1.7	2.0	2.8
	Nm/A	0.012	0.014	0.02
No-Load Speed	RPM	18298	15105	10891
	rad/s	1916	1581	1141
Back EMF Constant (±10%)	V/kRPM	1.26	1.49	2.07
	V/rad/s	0.012	0.014	0.02
Resistance (ph-ph, ±12%)	Ohms	6.88	3.42	3.82
Inductance (ph-ph, ±30%)	mH	0.62	0.51	0.65

(1) Motor mounted to a 38 mm sq. x 6.35 mm (1.5 in. sq x 0.25 in.) thick aluminum plate and ambient temperature of 20 °C

DIMENSIONS

MODEL	"A" DIM.	"B" DIM.	"C" DIM.
HT00800	.250 (6.4)	.430 (10.9)	.713 (18.1)
HT00801	.650 (16.6)	.830 (21.1)	1.113 (28.3)
HT00802	1.050 (26.7)	1.230 (31.3)	1.513 (38.5)



in (mm)

Brushless Torque Motors

HT0080x Series High Torque Frameless Brushless Torque Motors

PERFORMANCE

