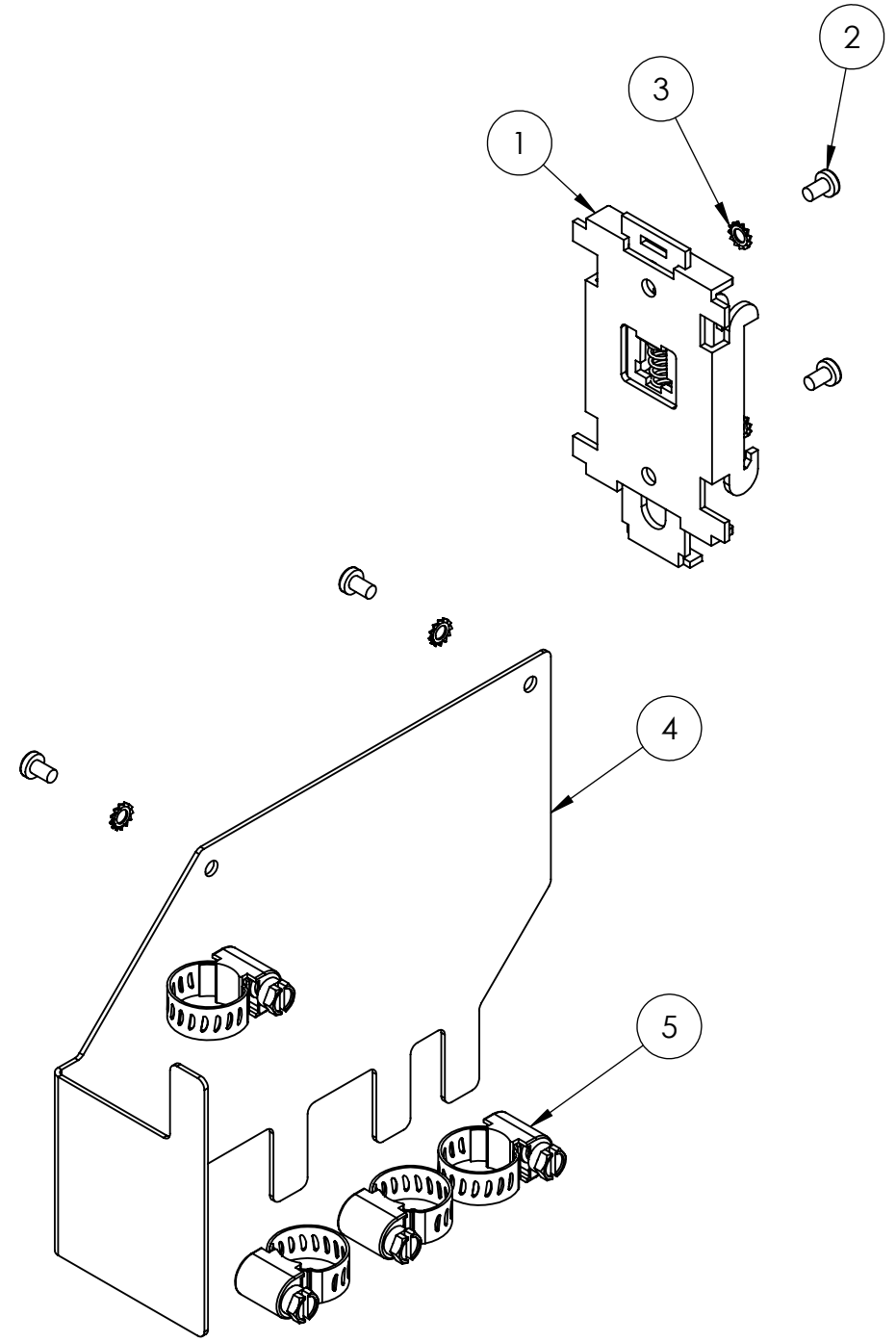


REV.	DESCRIPTION	DATE	APPROVED
1.0	PRODUCTION RELEASE.	6/25/2018	C. LAMENDOLA



ITEM NO.	PART NUMBER	DESCRIPTION	QTY.
1	80-2000-M3-05	Philips PHMS M3 x 5 mm Zinc Plated, RoHS	4
2	80-2039-M3	External-Tooth Lock Washer, M3 Screw Size, 3.2 mm ID, 6 mm OD, Zinc-Plated Steel	4
3	80-2043	DINM20 Steel DIN Clip, Unthreaded holes, 44.2mm width	1
4	20-2062-5	Cable Stay	1
5	80-2040	Worm-Drive Clamps for Firm Hose and Tube, Steel Screw, 5/16" Wide Band, 7/32" to 5/8" Clamp ID	4

UNLESS OTHERWISE SPECIFIED
DIMENSIONS ARE IN MM:
 0.5 >= DIM > 3 ± 0.1
 3 >= DIM > 6 ± 0.1
 6 >= DIM > 30 ± 0.2
 30 >= DIM > 120 ± 0.3
 120 >= DIM > 400 ± 0.5

APPROVAL	DATE
DRB: J. SHEARER	2/14/2017
APVD: C. LAMENDOLA	2/14/2017

PROPRIETARY
 THIS DRAWING IS THE PROPERTY OF ALLIED MOTION TECHNOLOGIES, INC. THE REPRODUCTION, DISTRIBUTION, AND UTILIZATION OF THIS DOCUMENT WITHOUT WRITTEN AUTHORIZATION IS PROHIBITED.

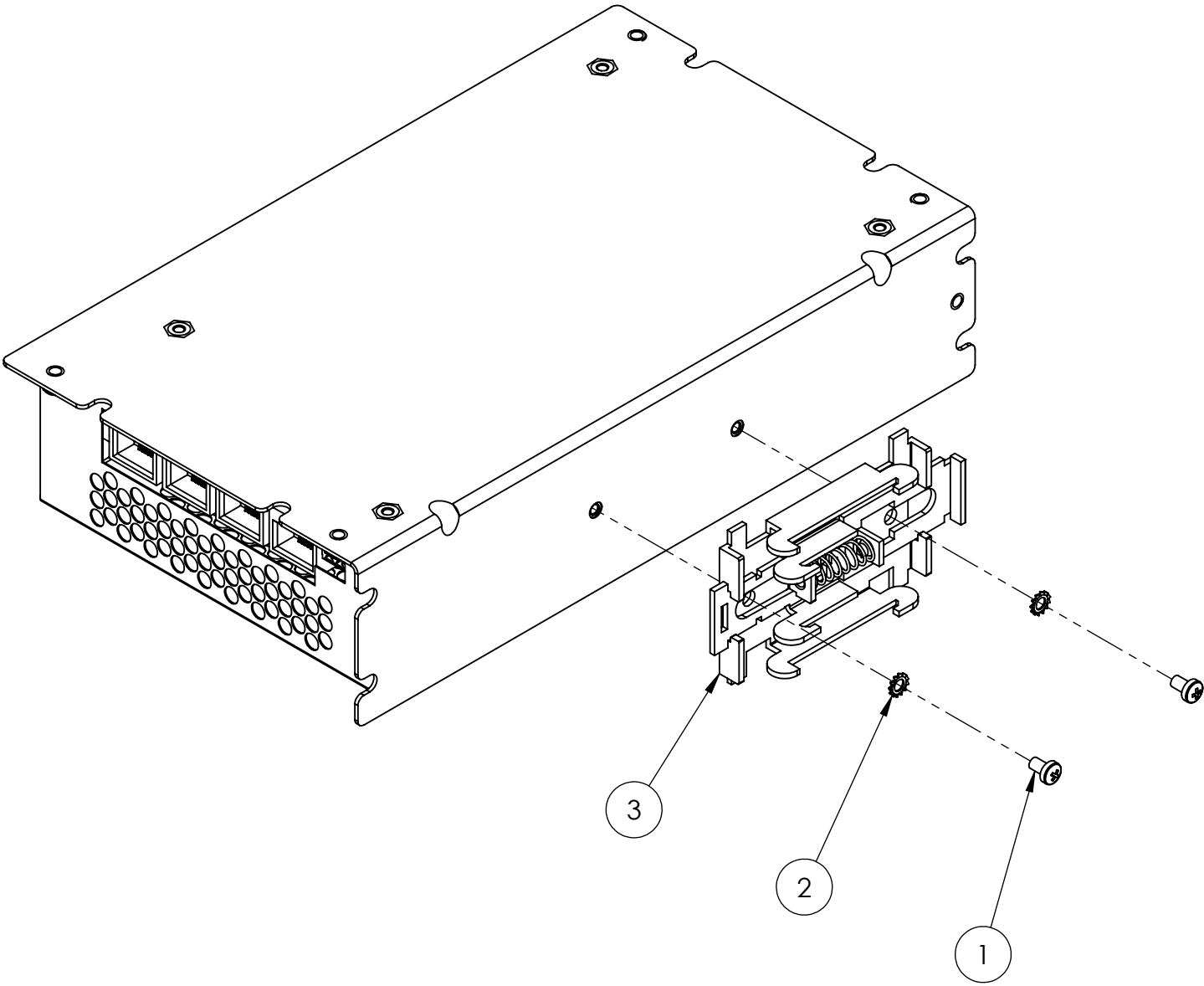
ALL SURFACES: $\sqrt{3.2}$
 REMOVE ALL SHARP EDGES:
 R 0.3 OR CHAMFER MAX

Allied Motion 495 COMMERCE DR, STE 3
 AMHERST, NY 14228-2313

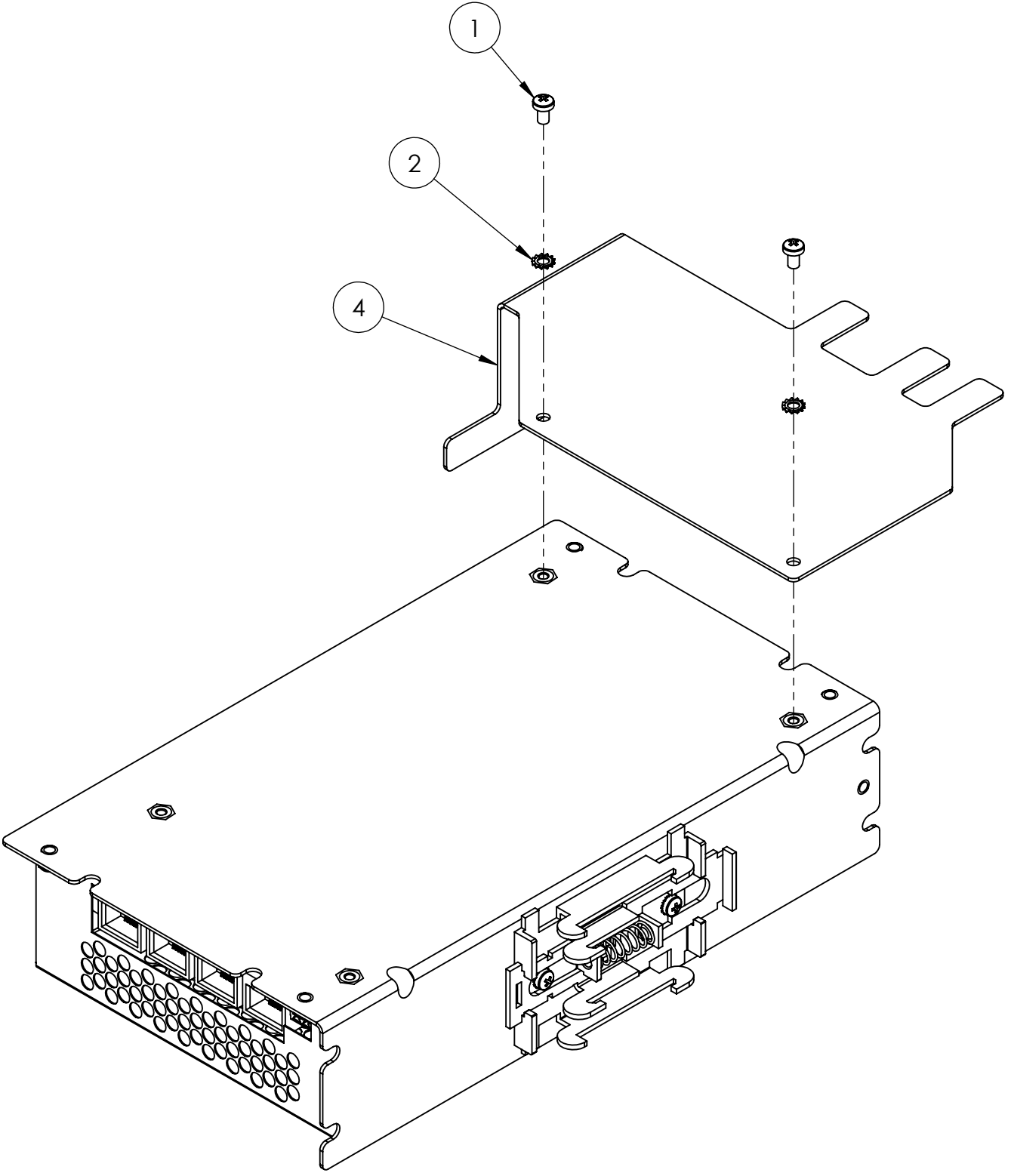
TITLE: **H Drive Controller, Grounding Kit**

DWG NO: **HDA-208-KIT2** REV: **1.0**

STEP 1:
INSTALL DIN RAIL MOUNT

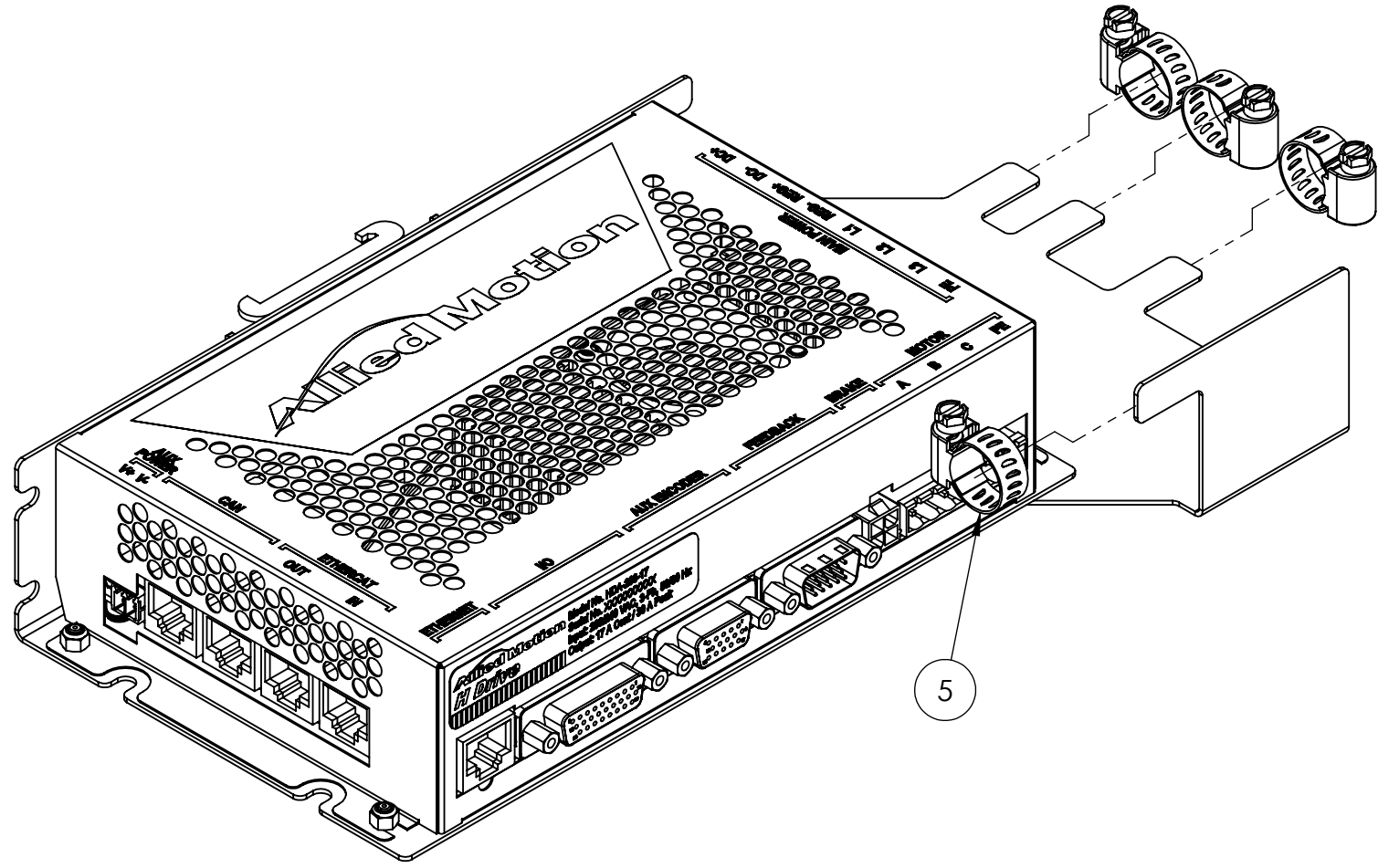


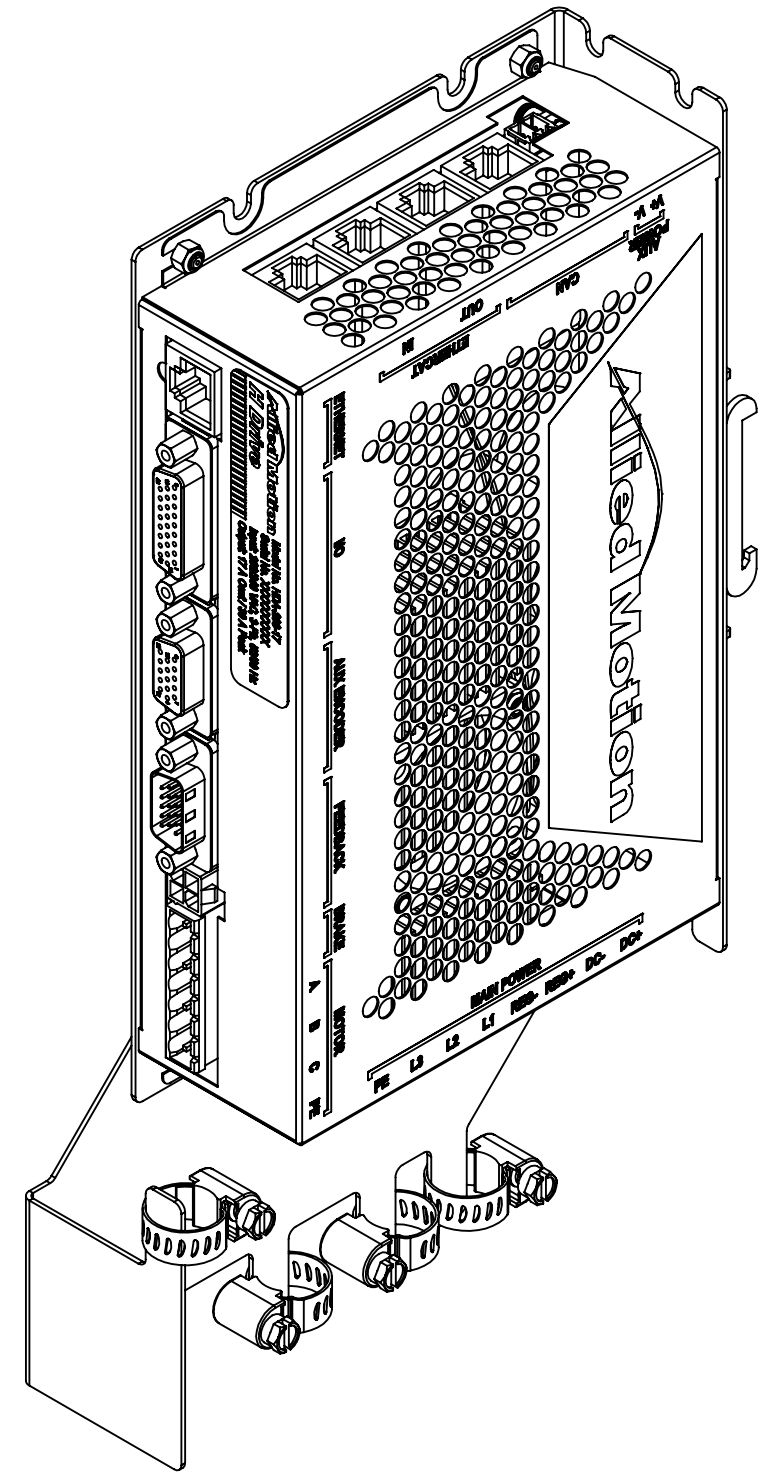
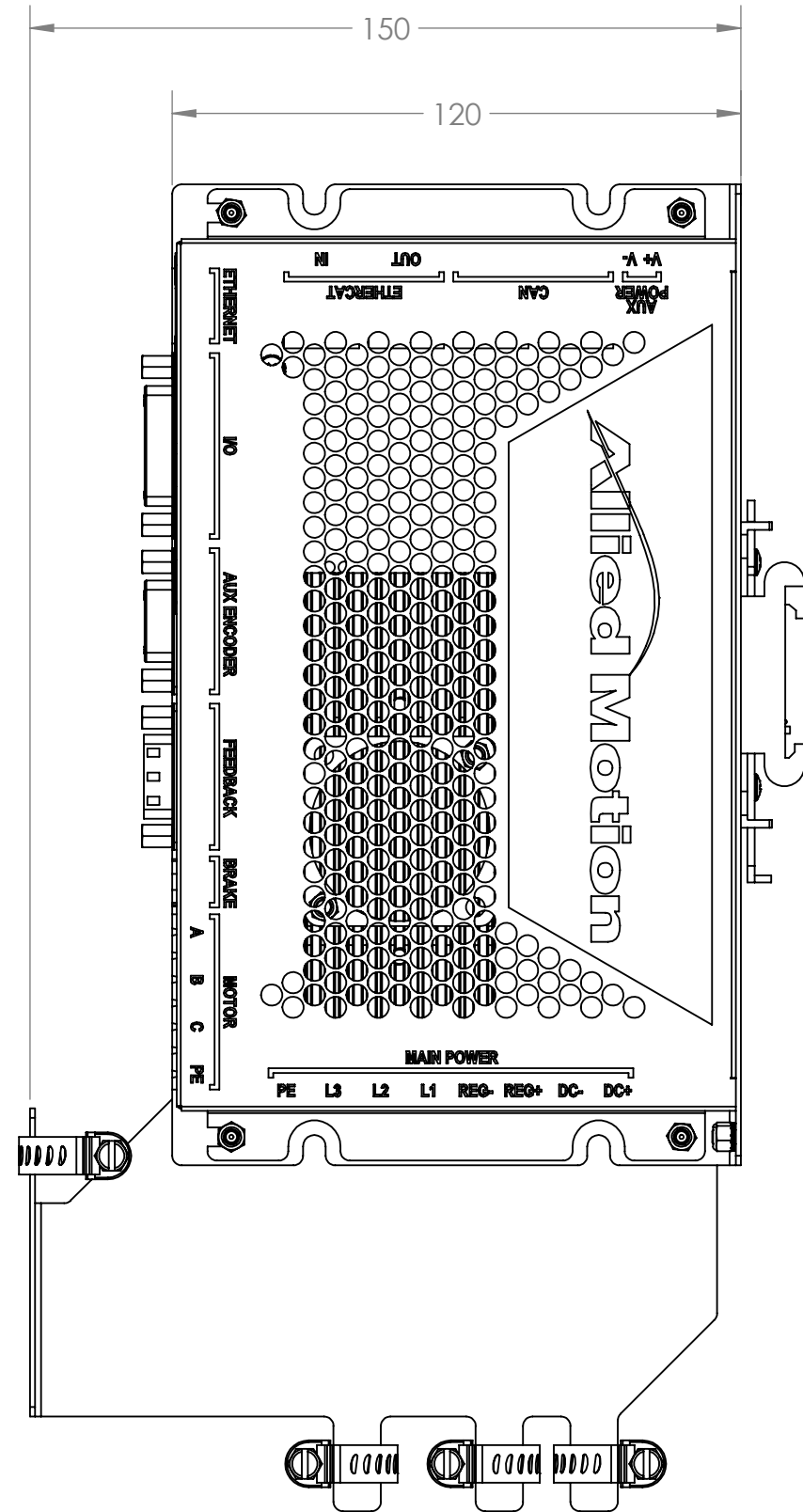
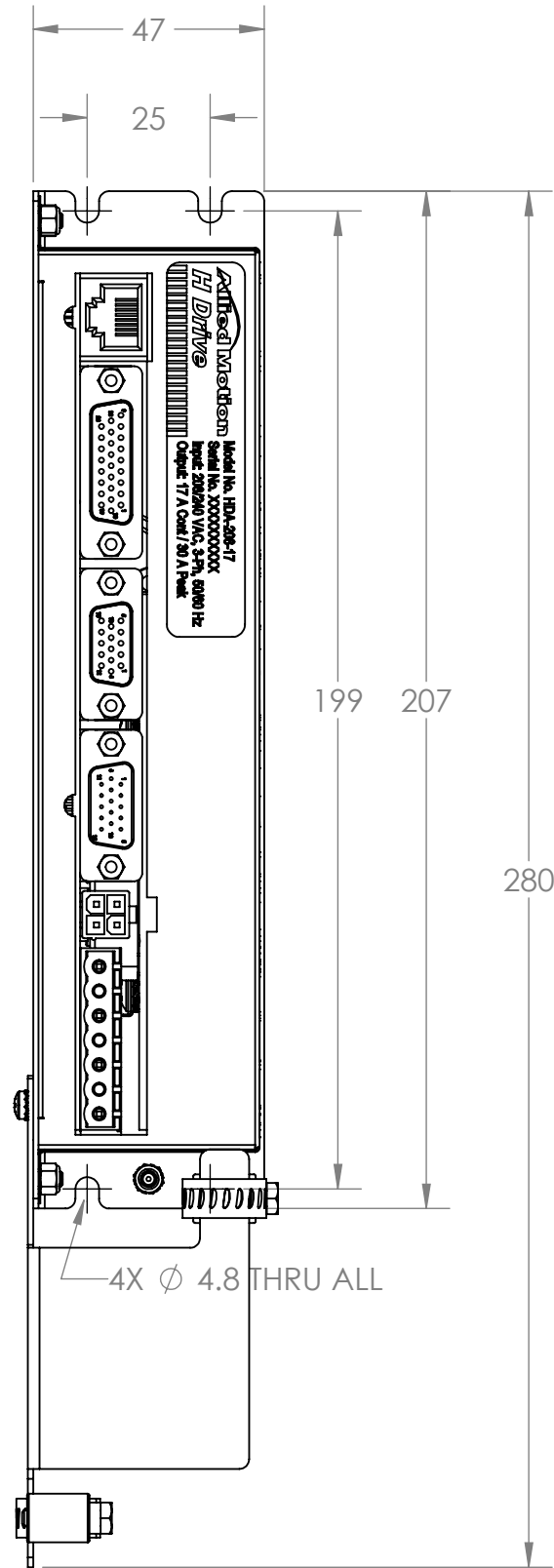
STEP 2:
INSTALL CABLE STAY



DWG NO:	HDA-208-KIT2	REV:	1.0
SIZE B	DO NOT SCALE	SHEET 2 OF 4	

STEP 3:
ADD GROUNDING CLAMPS TO CABLE STAY





4X Ø 4.8 THRU ALL