

Allient

CONNECTING what matters
formerly Allied Motion



Advanced Solutions for
AEROSPACE & DEFENSE

Advanced Motion, Controls and Power Solutions for **AEROSPACE & DEFENSE**

Allient products are in use in wide ranging aerospace and defense system applications. Allient possesses the expertise, products, and global presence to provide you with the motion, controls and power solutions you need in today's highly competitive world.



SPECIALIZED MOTION, CONTROLS & POWER SOLUTIONS ARE OUR SPECIALTY

Allient provides motion, controls and power solutions to a wide range of companies throughout the world. Our motion, controls and power products and systems are employed in aerospace and defense, commercial, and industrial markets. The key industries we serve in those markets are summarized further below.

Allient's COTS and custom brushed DC and brushless DC motor technology is commonly used by OEM's and Tier-1's for commercial aircraft actuator motors, high speed drone surface control, munition control, ground vehicles, weapons and many other defense applications.

Our patented automated winding technology ensures consistent performance in harsh environments and extreme temperatures.

For gear motor and gear box applications, our ITAR-approved manufacturing facilities produce all our internal & external gears domestically using high tolerance power skiving CNC's, gear hobbing automation and state of the art gear inspection equipment delivering up to AGMA 11 precision.



Why choose Allient to be your Motion, Controls and Power solutions provider?

A 70+ YEAR HISTORY OF APPLICATION SUCCESS!

For 70+ years, Allient's technology has supported both rotary and linear motion applications for munitions, ground vehicles, as well as manned and unmanned military and commercial aircraft programs.

Application Assistance

Allient's application engineers help you with product selection and integration.

Global Reach Solution Centers

Three strategically located Solution Centers – North America, Europe, Asia – offer local support to make it easy to do business with us. "We speak your language."

Advanced Technology Products

Allient develops advanced-technology products that enable our customers to "connect what matters." We strive to produce the most compact, innovative products with the highest performance at a competitive price.

Lean Enterprise: Allient Systematic Tools (AST)

Allient Systematic Tools (AST) is our set of lean enterprise business tools that drive continuous improvement. AST insures that our customers receive the highest quality products and service at the best possible price.

Quality

Our commitment to continuous quality improvement by applying Lean Six Sigma principles and by achieving ISO and AS certifications is a way of life at Allient.



Example Allient A&D Solutions

- Munition Programs** pg. 4 - 5
fin control/seeker motion/high-G gun hardened applications
- Military Aircraft & Ground Vehicle Programs**pg. 6-7
fuel pumps, gimbal control, SATCOM, door actuation
- Commercial Aircraft** pg. 8
fuel pumps/HVAC/auto pilot/door actuation/anti-vibration/pitch trim control/pilot controls/miscellaneous actuation operations
- Robotics & Unmanned Vehicle Motion Solutions** pg. 9
- More Brands within A&D** pg. 10-13
- Standard Products & Custom Solutions** pg. 14-15



WWW.ALLIENT.COM
www.alliedmotion.com
inquiry@allient.com

North America +1 (716) 242-7535
Europe +46 (8) 546 11 100
Asia +852 2607 4038

Munition Programs

Allient's library of mil-spec qualified motors & actuators for fin control, seeker motion and high-G gun hardened applications support new and legacy munition programs.



Programs with Allient Solutions:

- AGM-88 HARM
- AGM-65 Maverick
- AGS-155
- AGM-154 JSOW
- AIM-120 AMRAAM
- BGM TOW Launcher
- GMLRS
- M-47 Dragon Anti-Tank
- MIM-72A Chapparral
- Paveway III
- RIM 66 Standard Missile
- SM-2
- Stormbreaker (SBDII)
- Tactical Tomahawk

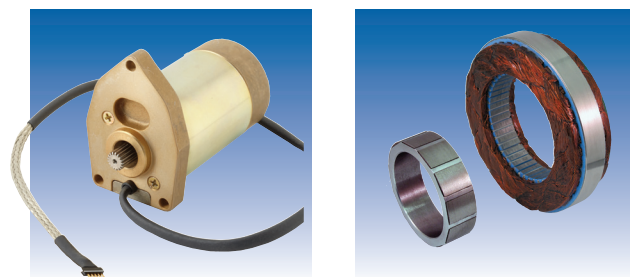
Missile Fin Control Actuation Systems

Allient's actuators, controllers, motors and gear boxes are commonly specified for new and legacy munition programs. We offer a number of unique electro-mechanical based solutions with mil-spec brushed DC or brushless DC motors with integrated gearing to achieve precise fin rotation where performance matters.

Allient also has a library of mil-aero qualified gear motor actuators rated for ballistic shock and demanding environments. Our in-house life cycle verification, environmental testing, magnetics expertise and simulation continue to position Allient as a preferred supplier for missile steering control.

Missile Seeker Control

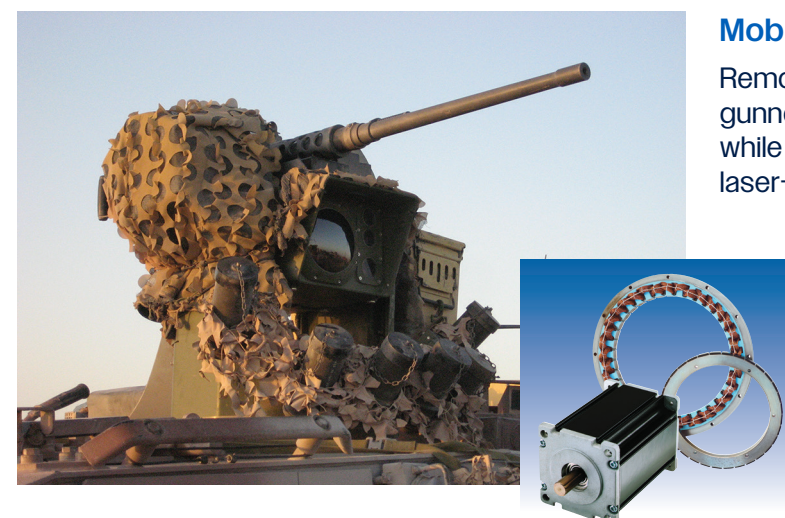
Allient's frameless torque motors, as well as our brushed and brushless DC motors are used to provide roll, de-roll and nod motion for missile seeker applications.



Mid-Range Munition Guidance Motors

The Mid-Range Munition (MRM) is a precision guided munition fired from a tank. The MRM will autonomously attack battlefield targets with pinpoint accuracy at beyond line-of-sight ranges of 8+ km.

Allient's engineers developed special motor-encoder units capable of withstanding very high g-forces. The motors control the motions of an "eyeball" seeker head platform nestled in the nose of the MRM projectile.



Mobile Weapons Platform Motors

Remotely operated weapons platforms enables a gunner to remain protected inside his or her vehicle while accurately operating this computer-stabilized, laser-aimed, remotely-mounted weapon.

Allient's frameless Megaflux torque motors control three sets of azimuth and elevation axes, while our Quantum servo motors power the weapon's cocking actuator. The result is fast, accurate firing with the weapon's operator safely controlling the weapon remotely.

Missile Seeker Optical Motor-Encoder

Allient's engineers have designed a high resolution optical motor-encoder limited-angle actuator to meet the extremely demanding requirements of modern standoff weapons. The CM-900 positions an infrared imaging seeker, a critical part of the weapon's precision autonomous guidance system.

The CM-900 includes an 18-bit absolute encoder and limited-angle torque motor. The encoder has a high bandwidth 2000 Hz (word rate) serial interface for high resolution and high speed positioning.



Military Aircraft and Ground Vehicle Programs

For flight surface control, our COTS and custom mil-spec brushed DC and brushless DC motors can be integrated into linear and rotary actuators.



Programs with Allient Solutions:

- CH-47 Chinook Rotorcraft
- CH-53 Super Stallion Rotorcraft
- F-35 Joint Strike Fighter
- HH-60 Pave Hawk Rotorcraft
- Joint Multi-Role Rotorcraft
- KAI
- KC-10 Extender Tanker
- MQ-1 Predator UAV
- V-22 VTOL

Auxiliary Unit Fuel Pump Motor

In the control of gas turbine engines used in aircraft auxiliary power units that must operate at tens-of-thousands of rpm, fuel pump frequency response and reliability are two key design parameters.

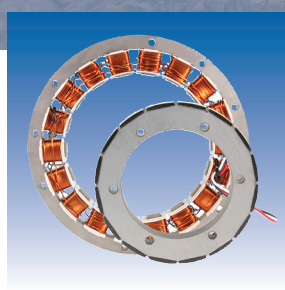
Allient engineers worked with the manufacturer of this gerotor-type turbine fuel pump to optimize the parameters of the pumps motor, an Allient Megaflux brushless torque motor, which resulted in an economical solution that exceeded performance and reliability goals.



UAV Gimbal Motion Control Motors

Advanced micro-gimbals with high performance inertial stabilization technology are found on both land-based and aerial platforms such as military surveillance UAVs.

The full motion EO imager system shown here attains continuous pan, +40°/-220° tilt and 200°/sec slew rates using custom-designed Allient brushless torque motors.



Pilot Cooling System Pump Motors

Pilots in military helicopters wear special flight suits featuring microclimate cooling. Cooling fluid is pumped through the suits by a special pump system driven by a brushless DC motor.

Allient helped the pump and cooling unit manufacturer achieve required system reliability with a custom KM 54 brushless DC motor solution. Featuring integrated drive electronics within the motor to keep connections to a minimum, the motor also features a specially designed housing that has a high IP54 protection level.

Door Actuation

For the opening and closing of doors used in aircraft fueling, landing gear, munition launch, as well as ground vehicles, performance is just as important as reliability.

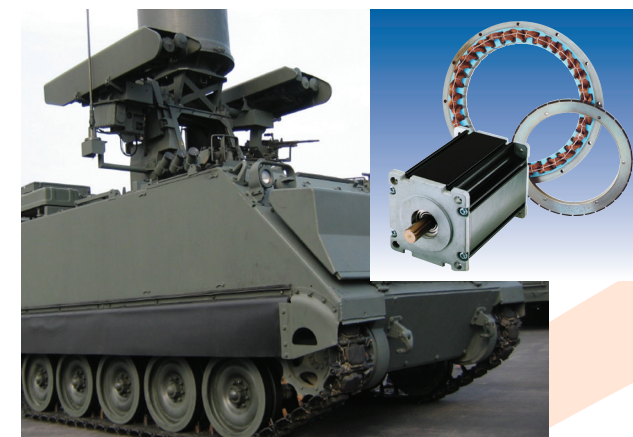
Allient offers mil-aero qualified linear actuators and gear motors used to open, close and latch doors on a number of aircraft, ground vehicles, marine, underwater, munition launch and refueling applications.



Mobile SATCOM Motion System

Broadband communications with on-the-move vehicles on land, at sea, or in the air, are now a reality thanks in part to advanced motion systems that enable very accurate satellite tracking, even as vehicles experience high dynamic levels of motion and vibration.

Allient's frameless Megaflux torque motors enable tightly integrated yaw, pitch and roll axes in SATCOM antenna systems. Mated servo drives are also integrated with the motors in some cases making for extremely compact designs.



Commercial Aircraft

Allient's frameless torque motors, DC motors & actuators support the single aisle, long range and biz jet market for fuel pumps, HVAC, auto pilot, door actuation, anti-vibration, pitch trim control, pilot controls and other misc actuation.



Emergency Fuel Boost Pump Motors

Many small propeller-driven aircraft benefit from a two-speed pump that maintains fuel pressure while cruising, and is able to boost fuel delivery for takeoff and landing.

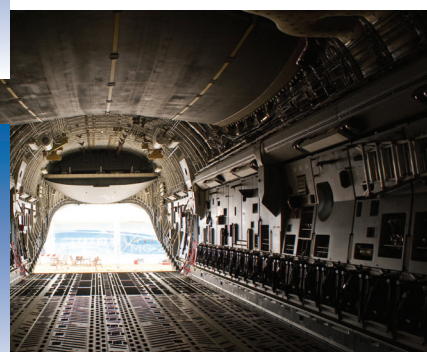
An aircraft pump manufacturer consulted Allient for such a two-speed fuel pump motor solution. Allient's design team engineered a unique solution in which a standard Endurance 25 brushed DC motor was modified to accept two different voltages. This enabled our customer to supply a reliable two-speed pump that doesn't stall, as was the case with some other motors tried previously in the same application.



Cargo Loading Systems

Aircraft cargo loading systems are equipped with several motors to enable freight loading and unloading automation.

Allient engineers have developed servo-controlled motors and frameless torque motors used within the positioning unit on commercial wide body and narrow body aircraft cargo loading systems. With Allient, your performance and reliability goals are exceeded.



Programs with Allient Solutions:

- Airbus
- AgustaWestland/Leonardo
- Boeing
- Bell
- Cessna
- Cirrus
- Embraer
- Eurocopter
- Jiangsu A-Star
- Fuji Heavy Industries
- Honda
- Ikana
- LET
- Pilatus
- Piper
- Sikorsky/Lockheed Martin

Robotics/Unmanned Vehicle Motion Solutions

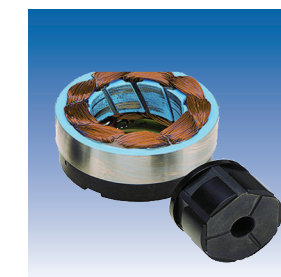
Allient's products and systems are in use in a very wide range of unmanned vehicle-related applications such as AGV traction and steering, military tracking and fire control, gimbal motion control, satellite tracking and many others.



Multi-Mission Robot Control Motors

Accommodating multiple heavy payload types, and able to perform multiple mission types (explosive ordnance disposal, route clearing, reconnaissance, and more), multi-mission robotics are designed to rapidly negotiate rough terrain and even climb stairs while handling heavy payloads.

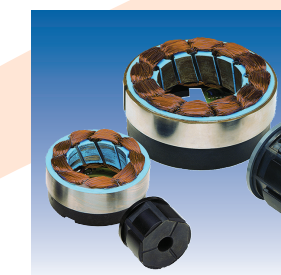
Allient supplies rugged frameless brushless DC torque motors used in robotic arm motion, as well as outer-rotor BLDC motors for track chassis motion on multi-mission robots.



Dual-Arm Military Robot Motors

Shown here mounted on the robot's mobile base is a dual-arm robotic manipulator system that is capable of lifting 110 lb (50 kg) and handling a myriad of field missions with human-like handling abilities.

Each arm assembly utilizes Allient brushless torque motors to achieve 20 degrees of freedom, giving the arm unmatched dexterity. The arm has a load capacity of 50+ lb (22.7 kg) and a total mass of only 16 lb (7.3kg).

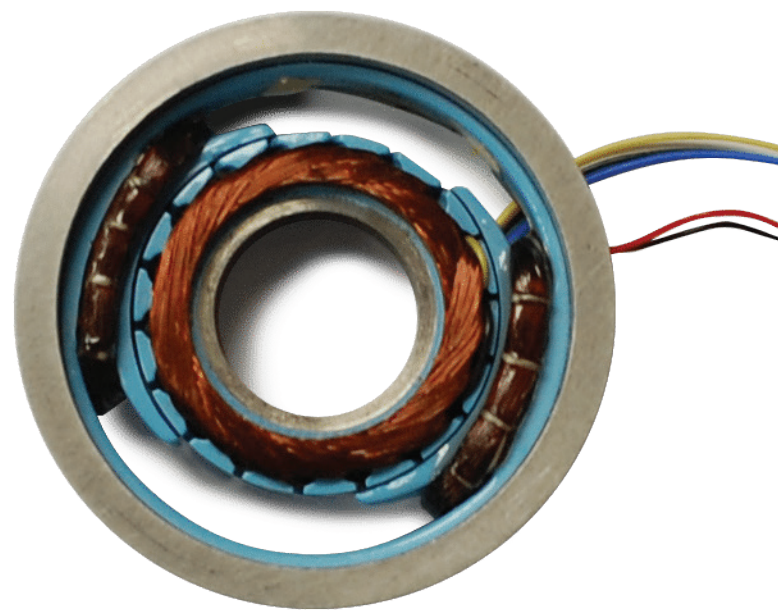


Learn More About Our Other Supported Brands within **AEROSPACE & DEFENSE**

Airex

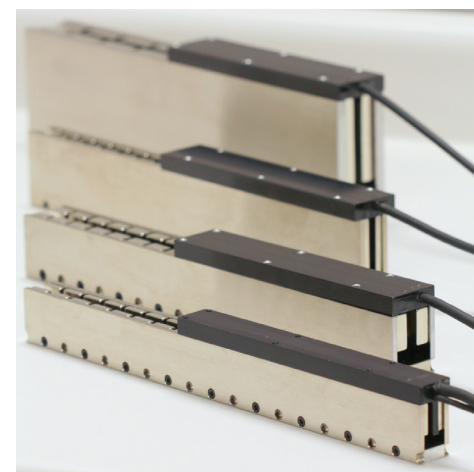
Custom engineered solutions for aerospace & defense solutions, ranging from low-cogging electric motors to enable stealth operation in munition propulsion systems to fin steering applications for airborne missiles.

For more information visit Airex.com



Technology Offering:

- Iron Core Linear Motors
- Ironless Linear Motors
- Magnetic Bearings
- Rotary Motors
- Voice Coils



ORMEC

High performance multi-axis and single axis motion control solutions for a variety of aerospace and defense applications including airframe assembly, aircraft maintenance and vehicle stabilizer test fixtures

For more information visit ORMEC.com



Technology Offering:

- Controllers
- Drives
- Motors
- Gearboxes
- Actuators
- I/O
- Pacer Encoders
- Software
- HMI
- OEM Products
- Legacy Products
- Used Equipment



WWW.ALLIENT.COM
www.alliedmotion.com
inquiry@allient.com

North America +1 (716) 242-7535
 Europe +46 (8) 546 11 100
 Asia +852 2607 4038

Learn More About Our Other Supported Brands within **AEROSPACE & DEFENSE**

FPH Group

Light-Weighting Technologies: FPH is an industry leader in the design, prototyping and manufacturing of advanced, light weight, composite materials to Defense OEMs around the world. Significantly reducing weight and improving strength on our customers platforms, our composite materials are found on ground based vehicles including stowage bins, bustle racks, and complete front-end modules.

For more information visit fphgroup.com.



Technology Offering:
Light Weighting
Electrification



ThinGap:

Permanent-magnet, BLDC motor kits featuring zero-cogging and high-efficiency, making them ideal for mission-critical applications such as gimbals, SATCOM, and Attitude Control Systems.

For more information visit ThinGap.com



Technology Offering:
TG Series Slotless Motor Kits
LS Series Slotless Motor Kits
TG Brushless Motors
LS Brushless Motors
Custom Solutions

WWW.ALLIENT.COM
www.alliedmotion.com
inquiry@allient.com

North America +1 (716) 242-7535
Europe +46 (8) 546 11 100
Asia +852 2607 4038

Standard Products



- Brushed DC Motors
- Brushless Direct Drive Torque Motors/Outer Runner Motors
- Gear Motors
- Gear Trains
- Mil-Aero AC Motors
- Mil-Aero Blowers
- Vehicle Traction and Steering



Custom & Specific Purpose Products

A recognized strength of Allient is our willingness and ability to develop custom motion control products and systems to meet the specific needs of customers with critical, highly specialized performance criteria. We may start with one of our standard products and modify it as needed, or as often is the case we start with a “clean sheet” and develop exactly what is needed when a modified standard will not suffice.

Shown at right is a sampling of some of the custom and specific purpose products we’ve developed for our customers.

Allient Solution Centers

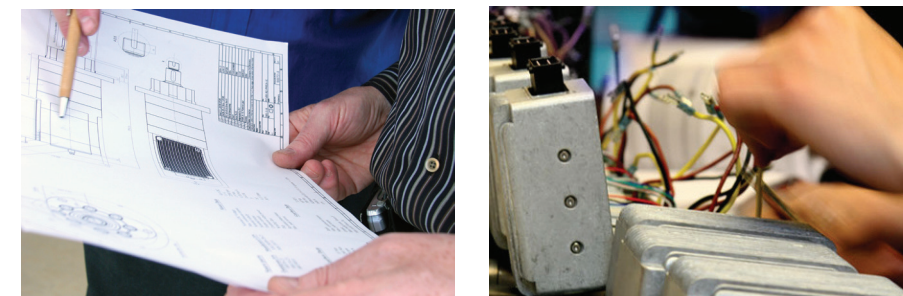
Allient maintains Solution Centers in three geographically strategic locations to assist our customers with all aspects of their product selection and buying decisions. These three facilities assure you of local support no matter your location around the globe.

Each Solution Center is manned by experienced application engineering and customer service teams, which are available to provide:

- Application analysis assistance
- Detailed product information and documentation
- Standard product selection
- Product customization and options guidance
- Specification development assistance for custom-design products
- Price quotations
- Ordering, order status and shipment information
- Logistics assistance

For assistance with all of your motion applications, contact us at one of our continental Allient Solution Centers.

Allient also has a global network of factory trained selling partners to serve you. Call us; we’ll put you in touch with an Allient sales partner near you.



Contact Us

NORTH AMERICA

Allient Inc. NASC
495 Commerce Drive
Amherst, NY 14228 USA

+1 (716) 242-7535
inquiry@allient.com

EUROPE

Allient Inc. EUSC
Ekbacksvägen 26, PO Box 11198
S-161 11 Bromma, Sweden

+46 (8) 546 11 100
inquiry@allient.com

ASIA

Allient Inc. ASC
538 Hehai West Road, Bldg. 19
Xinbei District
Changzhou 213125 China

+852 2607 4038
inquiry@allient.com



ALLIENT.COM

Copyright © 2023 by Allient Inc. All rights reserved.